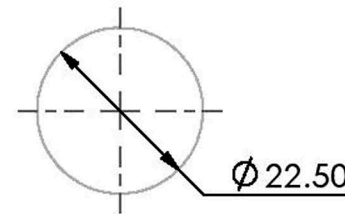
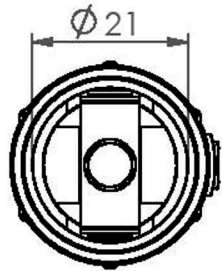


NO.	Part Name	Material	Note
1.	Casing	Iron	Nickel Plated
2.	Inner Tube	Iron	Nickel Plated
3.	Porcelain Socket	Ceramic	
4.	Screw(+)	Brass	
5.	Nut	Iron	Nickel Plated
6.	Washer	Iron	Nickel Plated
7.	Insulation	Bakelite	
8.	Terminal(-)	Iron	Nickel Plated



Mounting Hole

Modify	Date	Revision			Approval	No.	Item#	CP-8570				Rev.	0
							Title	Cig. Socket				Unit	m/m
							Mat'l					Ratio	1:1
Size	0.5-6	>6-30	>30-120	>120-400								Proj.	3rd
Tol	+/-0.05	+/-0.1	+/-0.15	+/-0.2	Auth	林協德	CHK					Derek	DWG